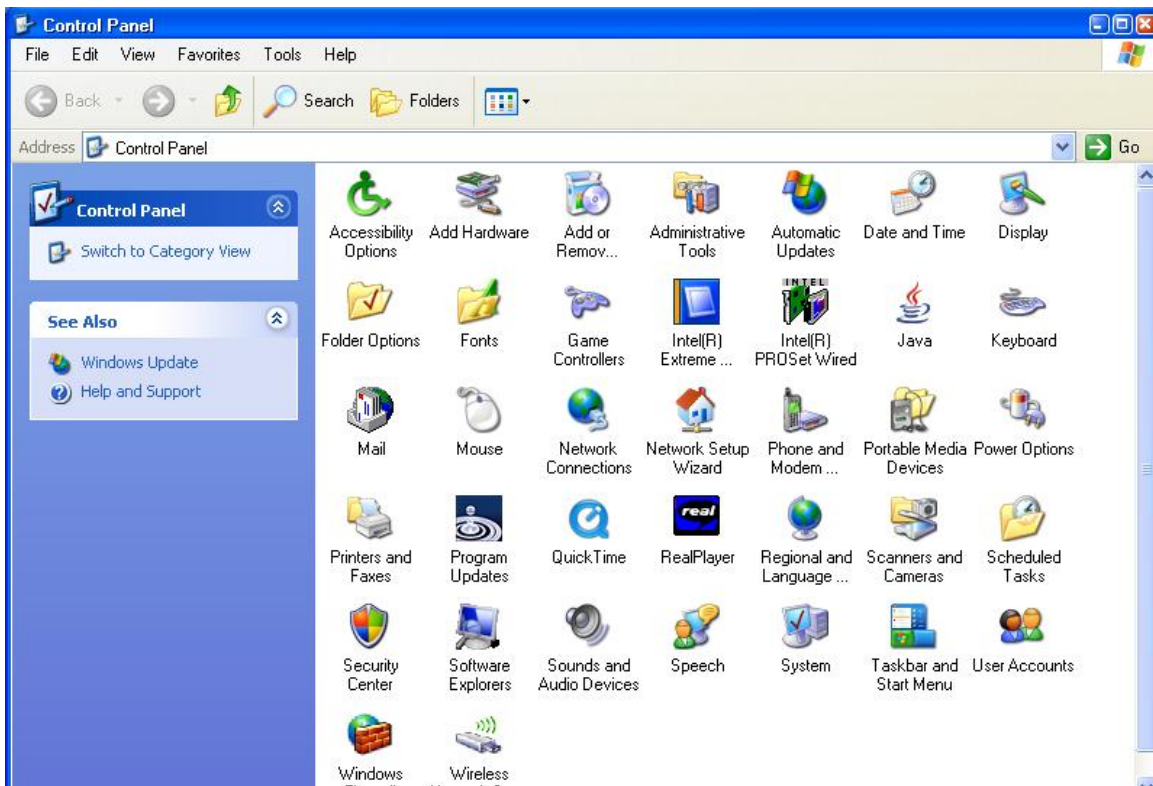


# Settings for alternate dialup network connections.

Referencing Windows XP, other operating systems may be different in configuration. Contact Advertisetech support at (888) 556-0762 with any questions.

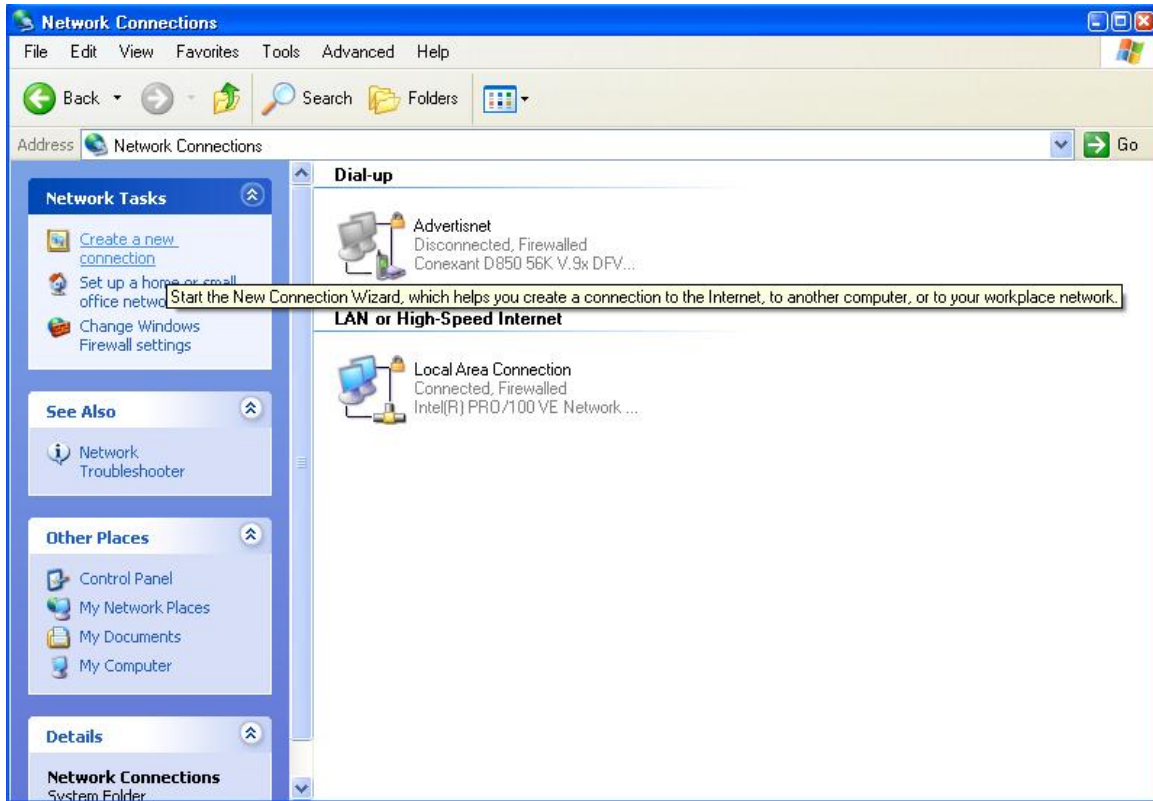
**Step 1. Click on Start button from desktop.**

**Step 2. Select Control Panel from Start menu.**



**Step 3. Select Network Options from Control Panel.**

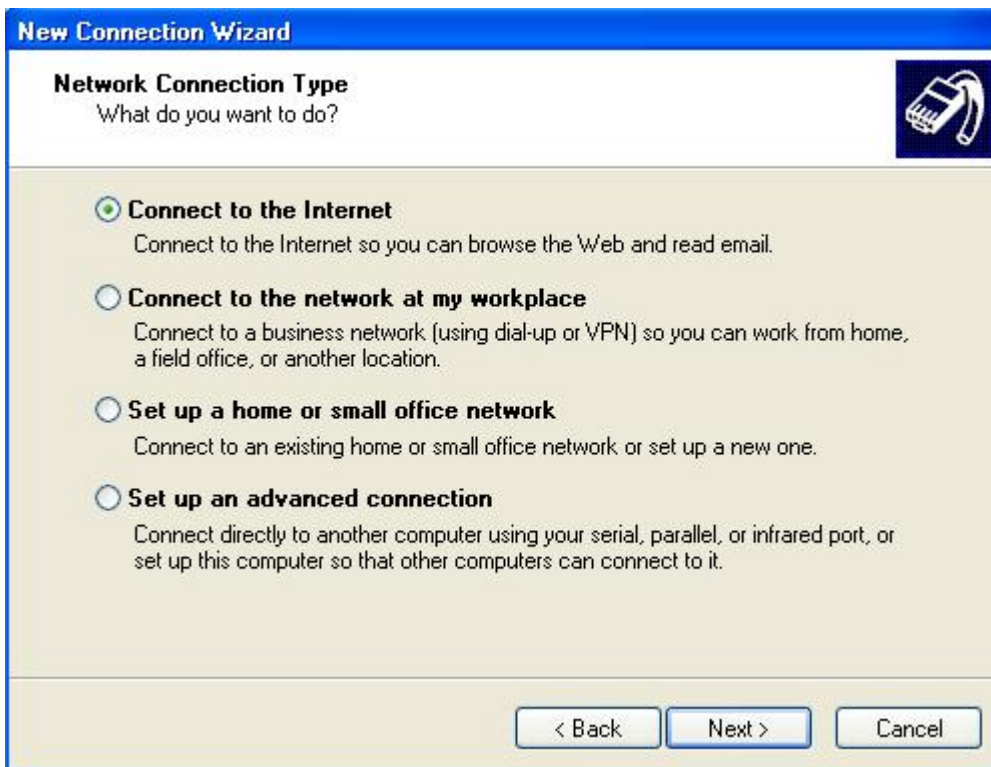
**Step 4. From Network Connections screen, select Create a New Connection from Network Tasks menu.**



**Step 5. Click Next to start New Connection Wizard.**



**Step 6. Select Connect to the Internet, then click Next.**



## Step 7. Select Set my connection Manually, and click Next.

**New Connection Wizard**

**Getting Ready**  
The wizard is preparing to set up your Internet connection.



How do you want to connect to the Internet?


- Choose from a list of Internet service providers (ISPs)
- Set up my connection manually**  
For a dial-up connection, you will need your account name, password, and a phone number for your ISP. For a broadband account, you won't need a phone number.
- Use the CD I got from an ISP

< Back    Next >    Cancel

## Step 8. Select Connect using dial-up modem, and Next.

**New Connection Wizard**

**Internet Connection**  
How do you want to connect to the Internet?



- Connect using a dial-up modem**  
This type of connection uses a modem and a regular or ISDN phone line.
- Connect using a broadband connection that requires a user name and password**  
This is a high-speed connection using either a DSL or cable modem. Your ISP may refer to this type of connection as PPPoE.
- Connect using a broadband connection that is always on**  
This is a high-speed connection using either a cable modem, DSL or LAN connection. It is always active, and doesn't require you to sign in.

< Back    Next >    Cancel

## Step 9. Name the connection (Advertisnet 2 or 3 etc.)

**New Connection Wizard**

**Connection Name**  
What is the name of the service that provides your Internet connection?



Type the name of your ISP in the following box.

ISP Name


The name you type here will be the name of the connection you are creating.

< Back   Next >   Cancel

## Step 10. Enter the 7 digit number of the alternate connection.

**New Connection Wizard**

**Phone Number to Dial**  
What is your ISP's phone number?



Type the phone number below.

Phone number:

You might need to include a "1" or the area code, or both. If you are not sure you need the extra numbers, dial the phone number on your telephone. If you hear a modem sound, the number dialed is correct.

< Back   Next >   Cancel

## Step 11. Example below is for Numbers to lakeozark.net

**New Connection Wizard**

**Internet Account Information** 

You will need an account name and password to sign in to your Internet account.

Type an ISP account name and password, then write down this information and store it in a safe place. (If you have forgotten an existing account name or password, contact your ISP.)

User name:

Password:


Confirm password:

Use this account name and password when anyone connects to the Internet from this computer

Make this the default Internet connection

## Step 11b. Example below is for numbers to dam.net

**New Connection Wizard**

**Internet Account Information** 

You will need an account name and password to sign in to your Internet account.

Type an ISP account name and password, then write down this information and store it in a safe place. (If you have forgotten an existing account name or password, contact your ISP.)

User name:

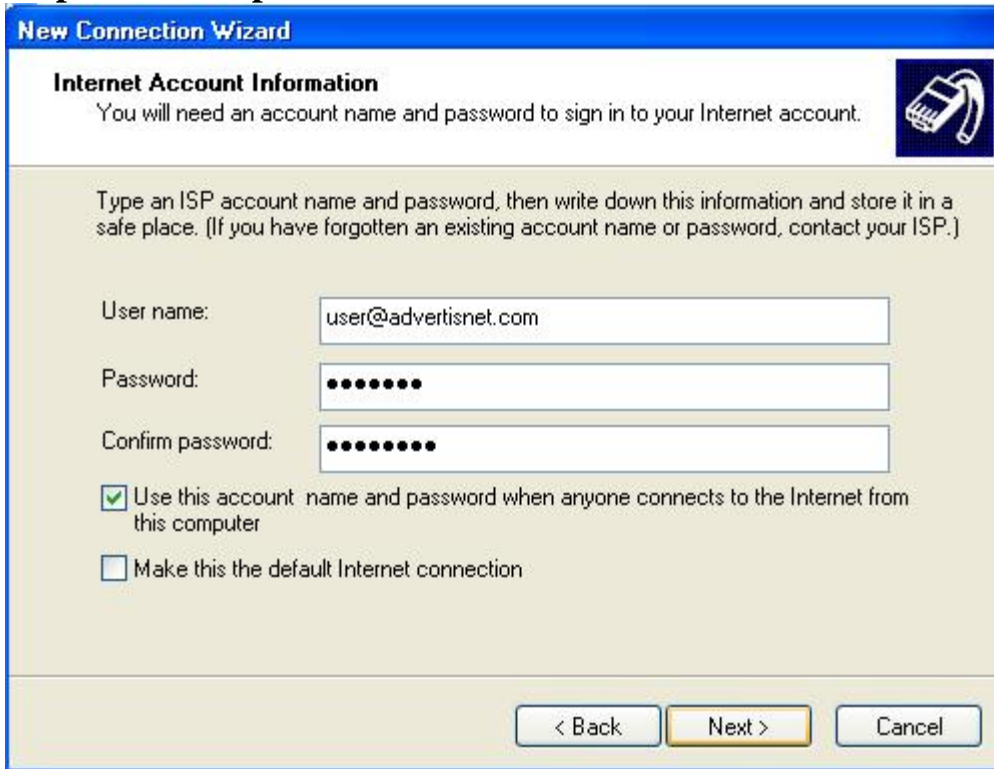
Password:

Confirm password:

Use this account name and password when anyone connects to the Internet from this computer

Make this the default Internet connection

### Step 11c. Example below is for numbers to Advertisnet.com



**New Connection Wizard**

**Internet Account Information**  
You will need an account name and password to sign in to your Internet account.

Type an ISP account name and password, then write down this information and store it in a safe place. (If you have forgotten an existing account name or password, contact your ISP.)

User name:

Password:

Confirm password:

Use this account name and password when anyone connects to the Internet from this computer

Make this the default Internet connection

< Back   Next >   Cancel

### Step 12. Click Next. On Completion screen click Add a shortcut to this connection to my desktop then click Finish.



**New Connection Wizard**

**Completing the New Connection Wizard**

You have successfully completed the steps needed to create the following connection:

**Advertisnet 2**

- Share with all users of this computer
- Use the same user name & password for everyone

The connection will be saved in the Network Connections folder.

Add a shortcut to this connection to my desktop

To create the connection and close this wizard, click Finish.

< Back   Finish   Cancel

**Please note that alternate numbers and their associated domain names can be obtained from [www.advertisnet.com](http://www.advertisnet.com) and selecting [Local Dial-up Number Search](#) from the main page.**

**Local numbers can also be obtained by calling Advertisnet tech support at (888) 556-0762 or local (573) 302-7288.**